



2025

TT Ricordi Greto

Introducing TT Ricordi Greto version 2.000—a contemporary Florentine sans serif that bridges historical elegance with modern typography! We've expanded the character set, added new features, alternate forms, and extended language support to enhance your creative possibilities.

TT Ricordi Greto is the brainchild of designer Ksenia Karataeva and marks the fifth release in our distinctive TT Ricordi collection. This unique series rediscovers typographic treasures from ancient inscriptions on plaques and stones, revitalizing them as contemporary typefaces for today's designers.

Inspired by a 1423 floor inscription in Florence's Basilica di Santa Croce, TT Ricordi Greto strikes a perfect balance between trendy modern aesthetics and authentic historical details. The result is a typeface where Renaissance character meets contemporary design sensibilities.

As a low-contrast Florentine sans serif with dynamic proportions, TT Ricordi Greto stands as the only sans serif in the otherwise serif-dominated TT Ricordi family. It retains subtle hints of serifs that nod to its historical origins while featuring closed apertures, dynamic proportions, and fluid terminals with distinctive curling and flaring stroke ends.

The typeface comes with an extensive collection of graphic icons (characters and objects), dingbats (flowers, stars, and teardrops), and thirteen catchwords. Each element has been meticulously crafted to complement the typeface's distinctive visual rhythm.

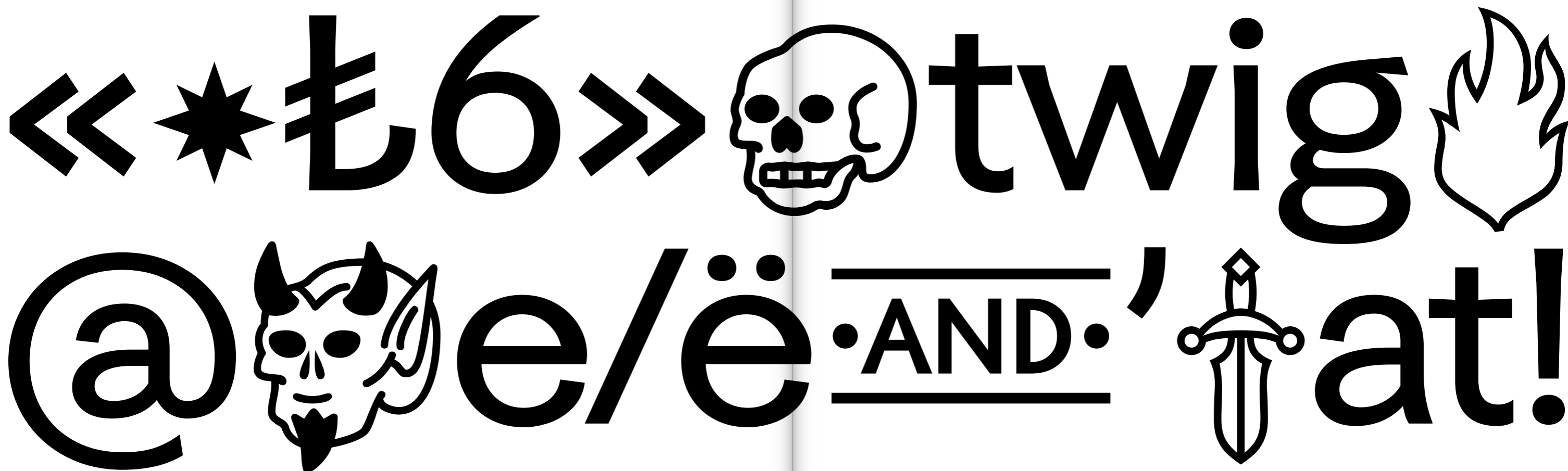
With this update, we've significantly expanded the character set. Specifically, we've added fully-developed lowercase characters (lowercase characters from the previous version can now be found in the small caps set), supplemented the

extended Cyrillic and Latin alphabets, expanded the basic currency set, added numbers and currencies for numerators/denominators, oldstyle and oldstyle tabular figures, fractions, and double ligatures for all forms of 'ДД' and 'дд'. We've also added new OpenType features, language support, and stylistic sets—particularly alternative forms of 'Кк', 'R', 'Кк', 'Жж', 'Яя' with straight legs.

This is a display font that looks contemporary and attracts attention. It's perfect for magazine covers, product packaging, signage, posters, and billboards, as well as for branding and web use.

TT Ricordi Greto

TT Ricordi Greto
Regular 180 pt



TT Ricordi Greto version 2.000 includes:

- 4 styles: 3 upright and 1 variable font that changes along the weight axis
- 1,365 glyphs in each style
- 32 OpenType features
- 13 stylistic sets
- Support for over 230 languages

TT Ricordi Greto—Florence's timeless beauty captured in type!

A a

Aa Bb Cc Dd Ee
Ff Gg Hh Ii Jj Kk
Ll Mm Nn Oo Pp
Qq Rr Ss Tt Uu Vv
Ww Xx Yy Zz
0123456789
@# \$% &* !?
абвгдеёжз

1 Regular
2 Medium
3 DemiBold

60 PT

48 PT

36 PT

24 PT

12 PT

Florentine Renaissance is the new approach to art and culture

in Florence during the period from the beginning of the 15th century to the end of the 16th century.

This new figurative language was linked to a new way of thinking about humankind and the world around it,

based on the local culture and humanism already highlighted in the 14th century by Petrarch and Coluccio Salutati, among others. Filippo Brunelleschi, Donatello and Masaccio's innovations in the figurative arts at the very beginning of the 15th century were not immediately accepted by the community.

TT Ricordi Greto has one variable font. To use the variable font on Mac you must have MacOS 10.14 or a newer version. An important clarification — not all programs support variable technologies yet, you can check the support status here: v-fonts.com/support/.

variable

400 WEIGHT 600

variable

400 WEIGHT 600

TT Ricordi Greto
Variable 144 pt

24 PT

The Florentine Renaissance was divided into several periods. Until the middle of the 15th century, this movement was based on technical and practical approaches in art.

12 PT

2nd phase covering the period of Lorenzo de' Medici's reign, from 1450 to 1492, was characterised by mainly intellectual contributions. The third phase was shaped by the precepts of Girolamo Savonarola, who had a profound and lasting influence on many artists, calling into question freedom of

choice through the establishment of a theocratic state in Florence. From 1490 to 1520, the High Renaissance corresponds to the period of "experimentation" by the three major figures of the Renaissance: Leonardo da Vinci, Michelangelo and Raphael. The art of the period which followed is Mannerism.

9 PT

At the dawn of the 15th century, while International Gothic was in vogue in Italy and Europe, a debate was taking place in Florence on two antagonistic artistic trends: one was inclined to accept the Gothic style adapted to local tradition, the other was inclined to reappropriate the more rigorous manner of the Ancients, restoring Florentia's original Roman bond. These

two trends can be seen in the construction of the Porta della Mandorla (1391), where, alongside Gothic spirals and ornamentation, the doorcases feature figures solidly modelled in the antique style. The competition for the north door of Florence's Baptistery, sponsored by the Arte di Calimala in 1401, further highlights these two tendencies. The specifications called for

a formella, a bas-relief depicting the Binding of Isaac. Lorenzo Ghiberti and Filippo Brunelleschi, among others, took part in the competition, whose finalist panels have survived. Ghiberti's work presents figures modelled in a Hellenistic style, with an abandonment of physical beauty and perfection, without expression or implication, while Brunelleschi's work is inspired by the an-

TT Ricordi Greto
Regular

24 PT

The Florentine Renaissance was divided into several periods. Until the middle of the 15th century, this movement was based on technical and practical approaches in art.

12 PT

2nd phase covering the period of Lorenzo de' Medici's reign, from 1450 to 1492, was characterised by mainly intellectual contributions. The third phase was shaped by the precepts of Girolamo Savonarola, who had a profound and lasting influence on many artists, calling into question freedom of

choice through the establishment of a theocratic state in Florence. From 1490 to 1520, the High Renaissance corresponds to the period of "experimentation" by the three major figures of the Renaissance: Leonardo da Vinci, Michelangelo and Raphael. The art of the period which followed is Mannerism.

9 PT

At the dawn of the 15th century, while International Gothic was in vogue in Italy and Europe, a debate was taking place in Florence on two antagonistic artistic trends: one was inclined to accept the Gothic style adapted to local tradition, the other was inclined to reappropriate the more rigorous manner of the Ancients, restoring Florentia's original Roman bond. These

two trends can be seen in the construction of the Porta della Mandorla (1391), where, alongside Gothic spirals and ornamentation, the doorcases feature figures solidly modelled in the antique style. The competition for the north door of Florence's Baptistery, sponsored by the Arte di Calimala in 1401, further highlights these two tendencies. The specifications called for

a formalla, a bas-relief depicting the Binding of Isaac. Lorenzo Ghiberti and Filippo Brunelleschi, among others, took part in the competition, whose finalist panels have survived. Ghiberti's work presents figures modelled in a Hellenistic style, with an abandonment of physical beauty and perfection, without expression or implication, while Brunelleschi's work is inspired by the an-

24 PT

The Florentine Renaissance was divided into several periods. Until the middle of the 15th century, this movement was based on technical and practical approaches in art.

12 PT

2nd phase covering the period of Lorenzo de' Medici's reign, from 1450 to 1492, was characterised by mainly intellectual contributions. The third phase was shaped by the precepts of Girolamo Savonarola, who had a profound and lasting influence on many artists, calling into question freedom of choice

through the establishment of a theocratic state in Florence. From 1490 to 1520, the High Renaissance corresponds to the period of "experimentation" by the three major figures of the Renaissance: Leonardo da Vinci, Michelangelo and Raphael. The art of the period which followed is Mannerism.

9 PT

At the dawn of the 15th century, while International Gothic was in vogue in Italy and Europe, a debate was taking place in Florence on two antagonistic artistic trends: one was inclined to accept the Gothic style adapted to local tradition, the other was inclined to reappropriate the more rigorous manner of the Ancients, restoring Florentia's original Roman bond. These

two trends can be seen in the construction of the Porta della Mandorla (1391), where, alongside Gothic spirals and ornamentation, the doorcases feature figures solidly modelled in the antique style. The competition for the north door of Florence's Baptistery, sponsored by the Arte di Calimala in 1401, further highlights these two tendencies. The specifications called for

a formalla, a bas-relief depicting the Binding of Isaac. Lorenzo Ghiberti and Filippo Brunelleschi, among others, took part in the competition, whose finalist panels have survived. Ghiberti's work presents figures modelled in a Hellenistic style, with an abandonment of physical beauty and perfection, without expression or implication, while Brunelleschi's work is inspired by the an-

The range of supported languages has expanded: now there are more than 230 of them.

CYRILLIC

Russian, Belarusian, Bosnian, Bulgarian, Macedonian, Serbian, Ukrainian, Kazakh, Kirghiz, Tadjik, Turkmen, Uzbek, Lezgian, Abazin, Agul, Archi, Avar, Dargwa, Ingush, Kabardian, Kabardino-Cherkess, Karachay-Balkar, Khvarshi, Kumyk, Lak, Nogai, Rutul, Tabasaran, Tsakhur, Buryat, Siberian Tatar, Tofalar, Touva, Bashkir, Chechen, Chuvash, Erzya, Kryashen Tatar, Mordvin-moksha, Tatar Volgaic, Uighur, Rusyn, Montenegrin, Romani, Dungan, Karakalpak, Shughni, Mongolian, Adyghe, Kalmyk

LATIN

English, Albanian, Basque, Catalan, Croatian, Czech, Danish, Dutch, Estonian, Finnish, French, German, Hungarian, Icelandic, Irish, Italian, Latvian, Lithuanian, Luxembourgish, Maltese, Moldavian, Montenegrin, Norwegian, Polish, Portuguese, Romanian, Serbian, Slovak, Slovenian, Spanish, Swedish, Swiss German, Valencian, Azerbaijani, Kazakh, Turkish, Uzbek, Acehnese, Banjar, Betawi, Bislama, Boholano, Cebuano, Chamorro, Fijian, Filipino, Hiri Motu, Ilocano, Indonesian, Javanese, Khasi, Malay, Marshallese, Minangkabau, Nauruan, Nias, Palauan, Rohingya, Salar, Samoan, Sasak, Sundanese, Tagalog, Tahitian, Tetum, Tok Pisin, Tongan, Uyghur, Afar, Asu, Aymara, Bemba, Bena, Chichewa, Chiga, Embu, Gikuyu, Gusii, Jola-Fonyi, Kabuverdianu, Kalenjin, Kamba, Kikuyu, Kinyarwanda, Kirundi, Kongo, Luba-Kasai, Luganda, Luo, Luyia, Machame, Makhuwa-Meetto, Makonde, Malagasy, Mauritian Creole, Meru, Morisyen, Ndebele, Nyankole, Oromo, Rombo, Rundi, Rwa, Samburu, Sango, Sangu, Sena, Seychellois Creole, Shambala, Shona, Soga, Somali, Sotho, Swahili, Swazi, Taita, Teso, Tsonga, Tswana, Vunjo, Wolof, Xhosa, Zulu, Ganda, Maori, Alsatian, Aragonese, Arumanian, Asturian, Belarusian, Bosnian, Breton, Bulgarian, Cognian, Cornish, Corsican, Esperanto, Faroese, Frisian, Friulian, Gaelic, Gagauz, Galician, Interlingua, Judaeo-Spanish, Karaim, Kashubian, Ladin, Leonese, Manx, Occitan, Retho-Romance, Romansh, Scots, Silesian, Sorbian, Vastese, Volapük, Võro, Walloon, Walser, Welsh, Karakalpak, Kurdish, Talysh, Tsakhur (Azerbaijan), Turkmen, Zaza, Aleut, Cree, Haitian Creole, Hawaiian, Innu-aimun, Lakota, Karachay-Balkar, Karelian, Livvi-Karelian, Ludic, Tatar, Vepsian, Guarani, Nahuatl, Quechua

şùppôrtś

maný

diffěreñt

lǎṅguǎǵęs

žtǎéiǎ

SPANISH

Renacimiento es el nombre dado en el siglo XIX a un amplio movimiento cultural que se produjo en Europa

ICELANDIC

Renesansan, eisini nevnd Endurreisnin, er heiti á men-
tanarligum ráki í Evropa í
tíðarskeiðnum umleið 1400

GERMAN

Renaissance bezeichnet
eine sich über drei Jahr-
hunderte erstreckende eu-
ropäische Kulturepoche in

BULGARIAN

Ренесансът е период
в европейската история,
отбелязващ прехода от
Средновековието към

TURKISH

Rönesans, Orta Çağ ve Re-
form arasındaki tarihsel dö-
nem olarak bilinir. 15 - 16.
yüzyıl İtalya'sında batı ile

CROATIAN

Renesansa je jedno od naj-
kreativnijih razdoblja u kn-
jiževnosti i umjetnosti koje je
označilo prekid sa srednjim



TABULAR FIGURES

OLDSTYLE FIGURES

TABULAR OLDSTYLE FIGURES

NUMERATORS

DENOMINATORS

SUPERSCRIPTS

SUBSCRIPTS

CASE SENSITIVE

FRACTIONS

DLIG

SS01 – Alternative M

SS02 – Alternative Ф

SS03 – Alternative Forms

SS04 – Circled Numbers

SS05 – Negative Circled Numbers

SS06 – Dutch IJ

SS07 – Catalan Ldot

SS08 – Romanian Comma Accent

SS09 – Turkish i

SS10 – Bashkir localization

SS11 – Chuvash localization

SS12 – Bulgarian localization

SS13 – Serbian localization

1234567890

1234567890

1234567890

H12345

H12345

H12345

H12345

[(H)]

1/2 1/4 1/7

ДД дд

М м

Ф ф

Қ қ Ў ў Я я Ж ж

0 1 2 3 4

5 6 7 8 9

IJ ij ÍJ íj

L·L l·l

Șș Țț

i

Ff ƒƒ Çç

Çç

ВГДЗИКТЩЮ

б

1234567890

1234567890

1234567890

H¹²³⁴⁵

H₁₂₃₄₅

H¹²³⁴⁵

H₁₂₃₄₅

[(H)]

1/2 1/4 1/7

ДД дд

М м

Ф ф

Қ қ Ў ў Я я Ж ж

① ② ③ ④

⑤ ⑥ ⑦ ⑧ ⑨

IJ ij ÍJ íj

L·L l·l

Șș Țț

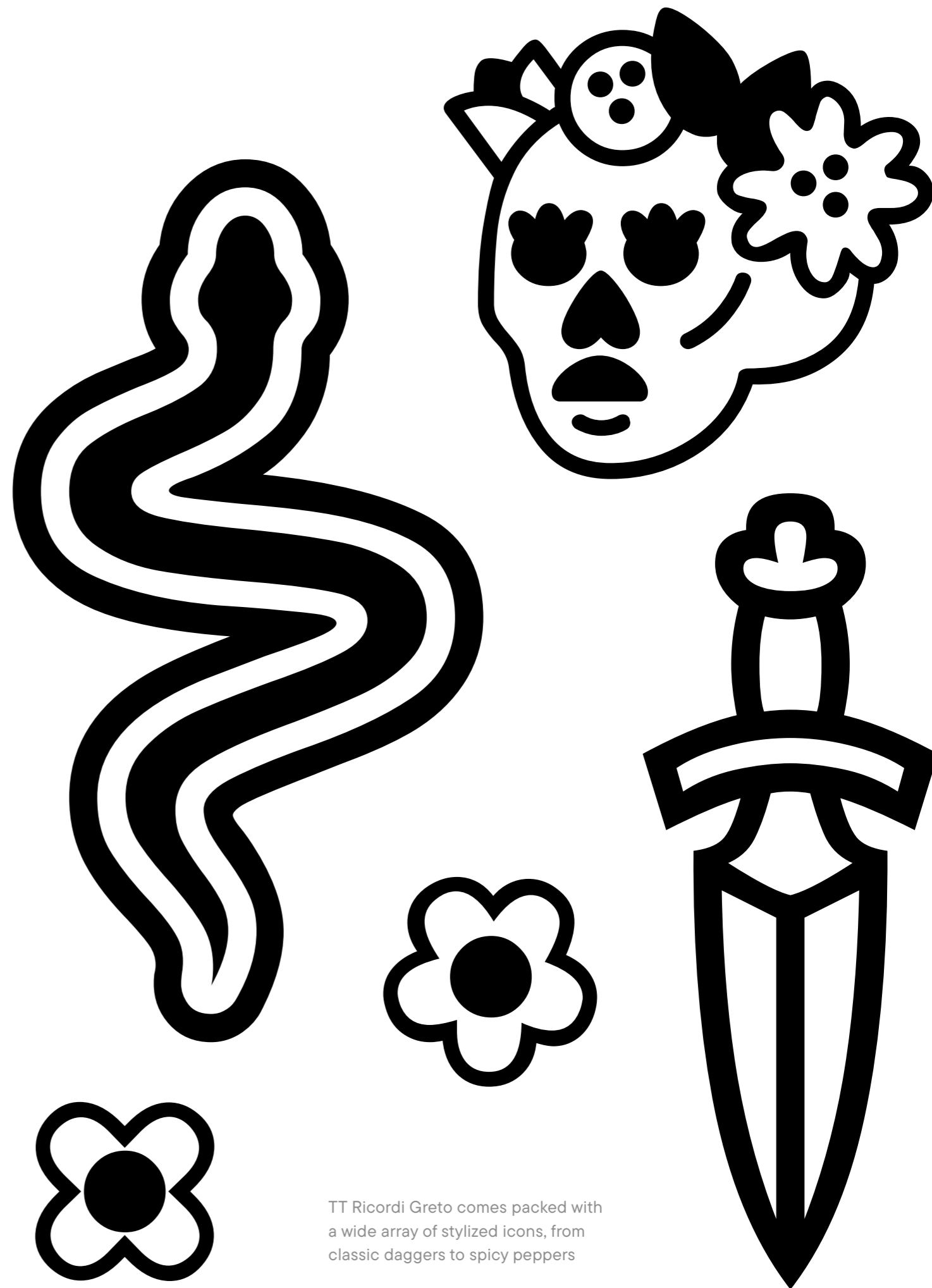
i

Ff ƒƒ Çç

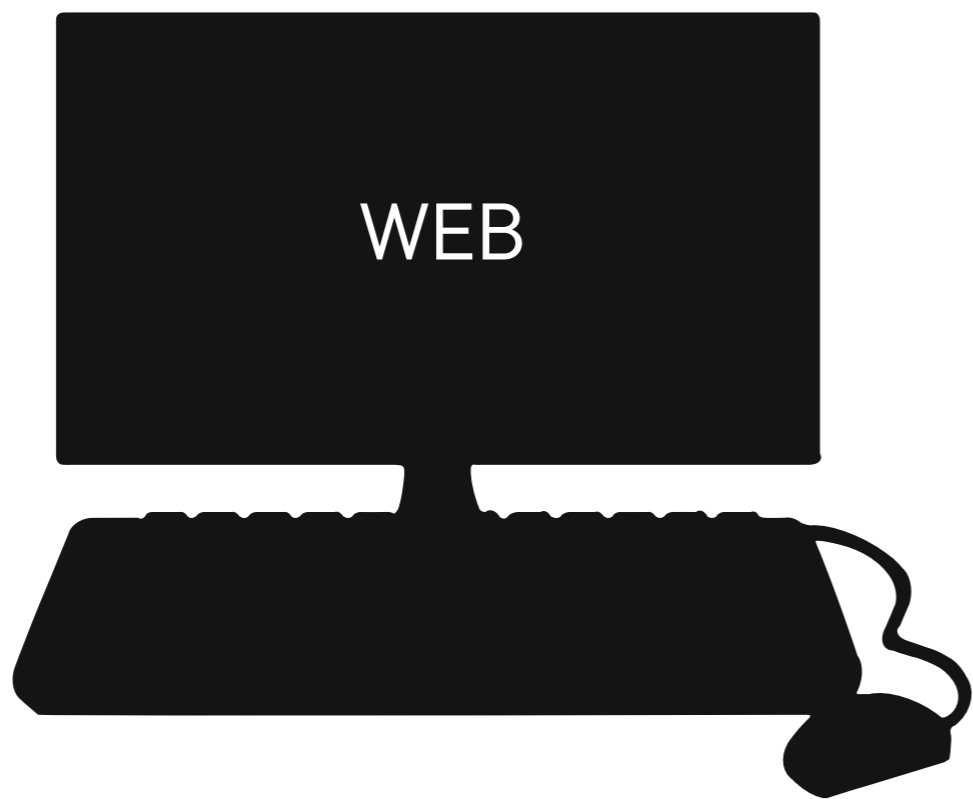
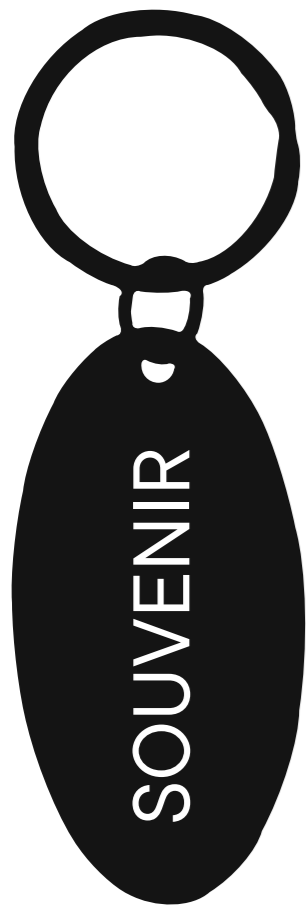
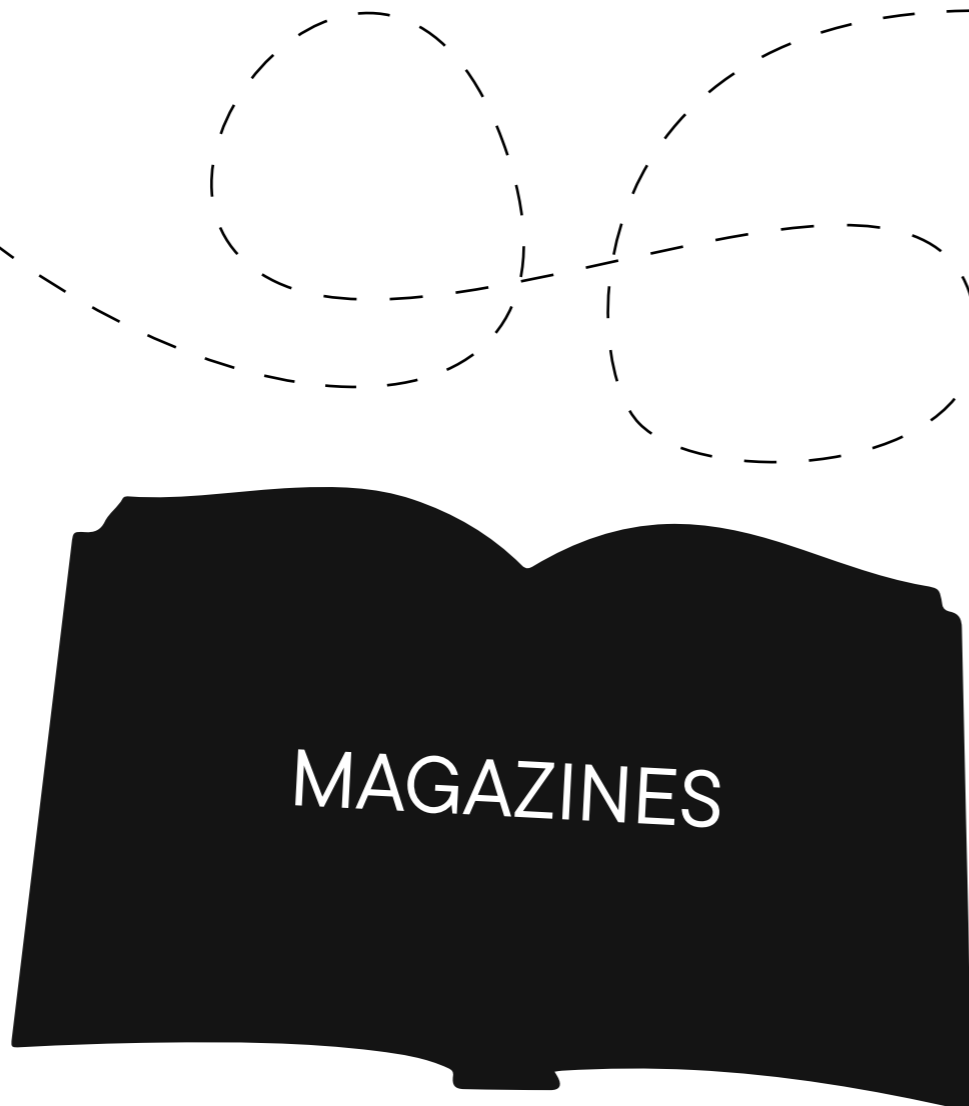
Çç

Вгдзиктщю

б



TT Ricordi Greto comes packed with a wide array of stylized icons, from classic daggers to spicy peppers



TypeType company was founded in 2013 by Ivan Gladkikh, a type designer with a 10 years' experience, and Alexander Kudryavtsev, an experienced manager. Over the past 10 years we've released more than 75+ families, and the company has turned into a type foundry with a dedicated team.

Our mission is to create and distribute only carefully drawn, thoroughly tested, and perfectly optimized type-faces that are available to a wide range of customers.

Our team brings together people from different countries and continents. This cultural diversity helps us to create truly unique and comprehensive projects.

Copyright © TypeType Foundry 2013–2025.

All rights reserved.

For more information about our fonts,
please visit our website

www.typetype.org

Most of the texts used in this specimen
are from Wikipedia.

TT Ricordi Greto



