



2023

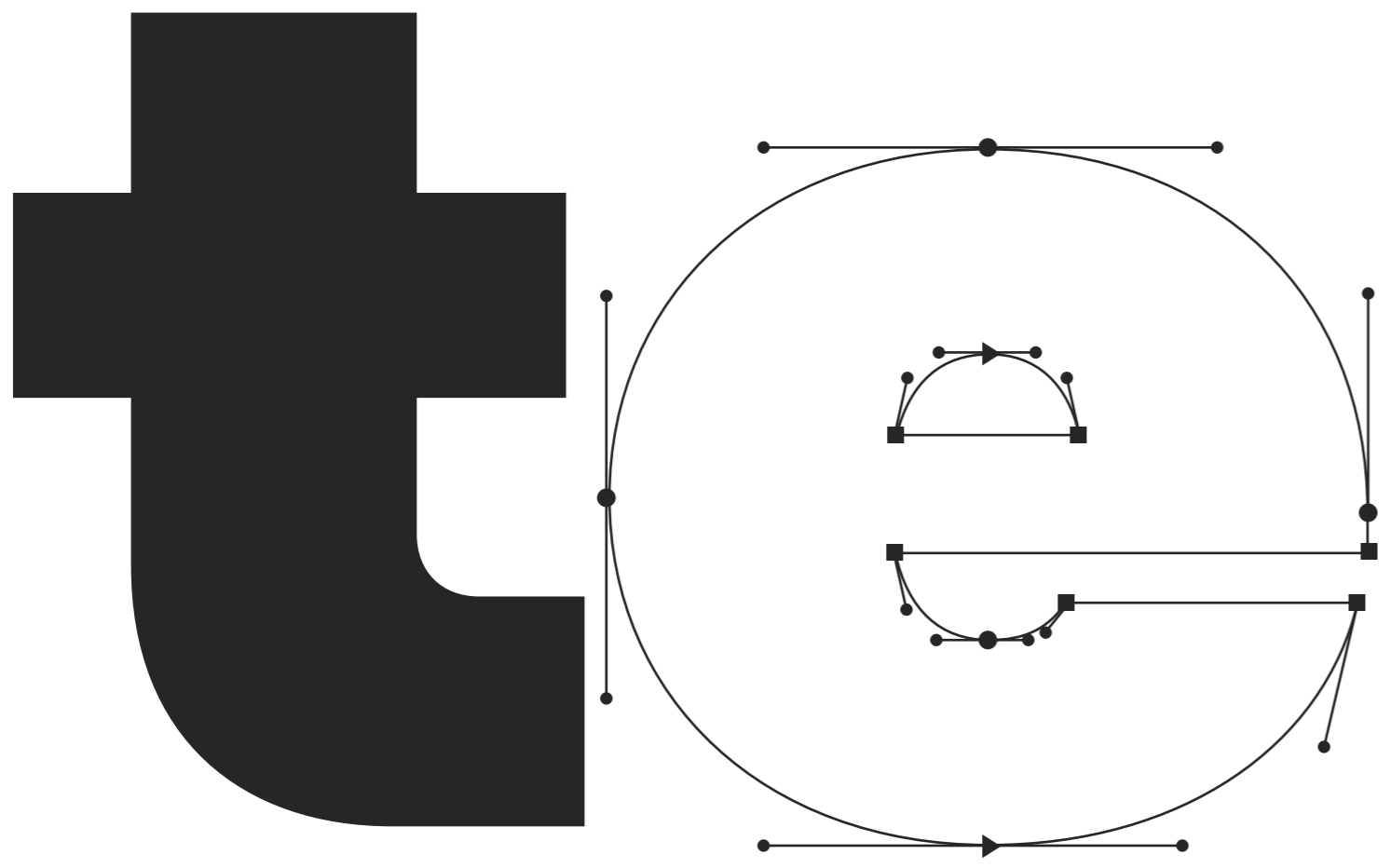
TT Firs Text



TT Firs Text is a neutral Scandinavian sans serif. This font evokes associations with Nordic aesthetics: it is calm but elegant and enchanting.

The font is legible and readable even when a small point size is used to type the text block. The font's neutral look makes it well-suited for an unlimited number of contexts. It is perfect for catalog and poster design, websites, book printing, branding, and package design. The font looks aesthetic in infographics, store, and exhibition design concepts.

TT Firs Text includes 23 font styles: 11 roman, 11 italic, and 1 variable font. Each font style consists of 898 characters, including the characters of the expanded Latin and Cyrillic writing systems. The font has 31 OpenType features, among which are localization features for various languages, circled numerators, and stylistic alternate for the ampersand.

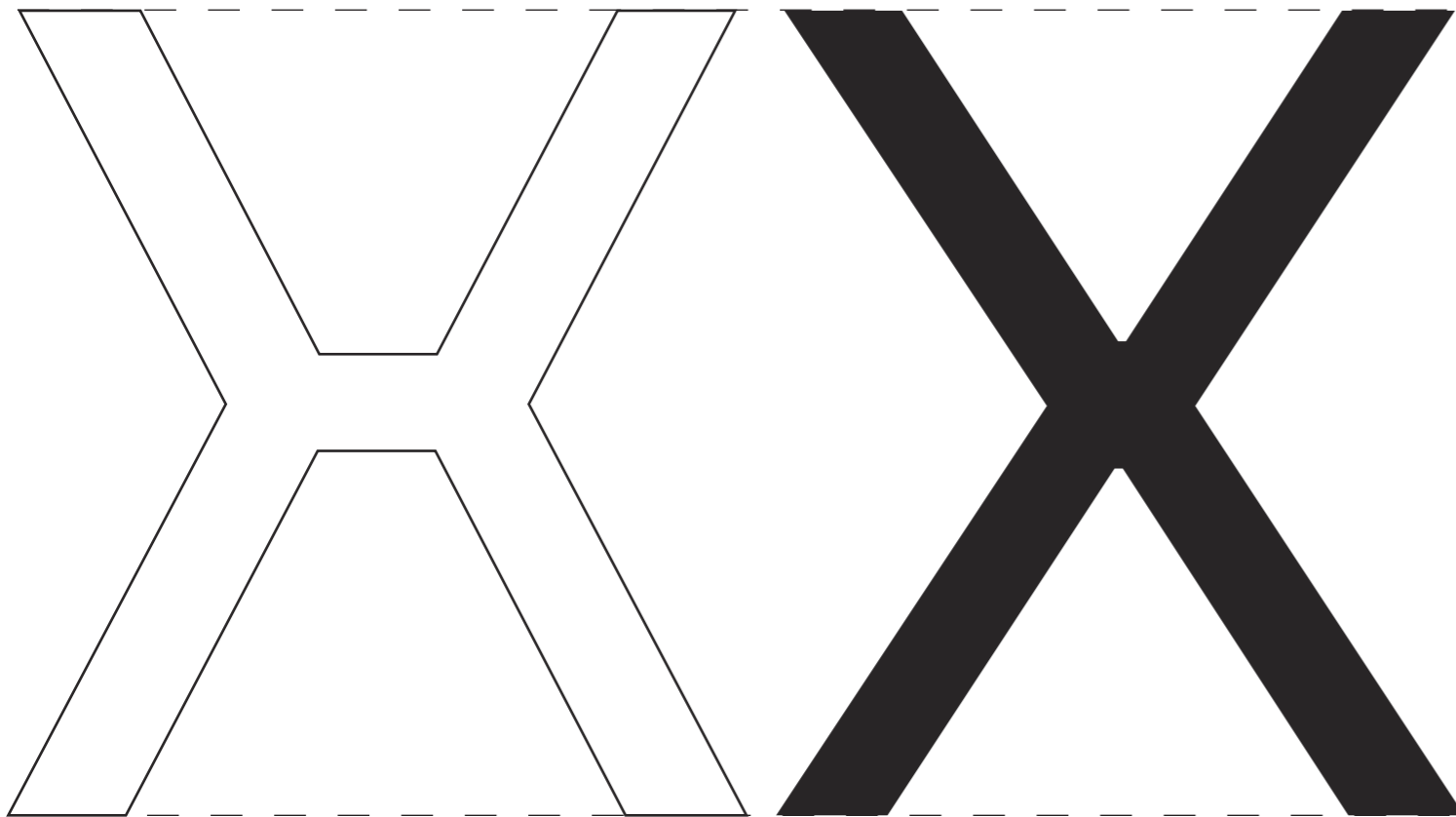


TT Firs Text
ExtraBlack 500 pt

TT Fir Text is a product of a thorough re-imagining of the TT Fir typeface.

In 2023, we are introducing a perfectly-balanced font pair consisting of the updated display TT Fir Neue and the versatile TT Fir Text.

In TT Fir Text, we toned down the TT Fir Neue's character by softening the mood of the elements and making the font's set more consistent.



TT Fir Neue
Regular 620 pt

TT Fir Text
Regular 620 pt

AaBbCcDdEeFfGgHhIi
JjKkLlMmNnOoPpQqRr
SsTtUuVvWwXxYyZz
0123456789 @#\$%&*!?
абвгдеёжз + läťjň

TT Fir Neue
Regular 48 pt

AaBbCcDdEeFfGgHhIi
JjKkLlMmNnOoPpQqRr
SsTtUuVvWwXxYyZz
0123456789 @#\$%&*!?
абвгдеёжз + läťjň

TT Fir Text
Regular 48 pt

1	Thin	<i>Italic</i>
2	ExtraLight	<i>Italic</i>
3	Light	<i>Italic</i>
4	Regular	<i>Italic</i>
5	Normal	<i>Italic</i>
6	Medium	<i>Italic</i>
7	DemiBold	<i>Italic</i>
8	Bold	<i>Italic</i>
9	ExtraBold	<i>Italic</i>
10	Black	<i>Italic</i>
11	Ex.Black	<i>Italic</i>

48 PT

Typographic Swiss Style

The International Typographic Style, also known as the Swiss Style, emerged in Switzerland during the 1950s but continued to develop internationally.

It expanded on and formalized the modernist typographic innovations of the 1920s that emerged in part out of art movements such as Constructivism (Russia), De Stijl (The Netherlands) and at the Bauhaus (Germany).

The International Typographic Style has had profound influence on graphic design as a part of the modernist movement, impacting many design-related fields including architecture and art. It emphasizes simplicity, clarity, readability, and objectivity. Hallmarks of the style are asymmetric layouts, use of a grid, sans-serif typefaces like Akzidenz Grotesk and Helvetica, and flush left, ragged right text.

The style is also associated with a preference for photography in place of illustrations or drawings. The style emerged from a desire to represent information objectively, free from the influence of associated meaning. The International Typographic Style evolved as a modernist graphic movement that sought to convey messages clearly and in a universally straightforward manner. Two major Swiss design schools are responsible for the early years of International Typographic Style. A graphic design technique based on grid-work that began in the 19th century became inspiration for modifying the foundational course at the Basel School of Design in 1908.

24 PT

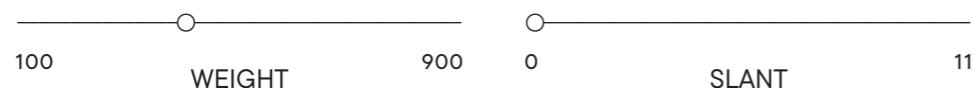
18 PT

12 PT

8 PT

TT Firs Text includes a variable font with two axes of variation: weight and slant. To use the variable font with 2 variable axes on Mac you must have MacOS 10.14 or a newer version. An important clarification—not all programs support variable technologies yet, you can check the support status here: v-fonts.com/support/.

Variable



TT Firs Text
Variable 180 pt

24 PT

This idea of the solution to the design emerging from the problem itself was a reaction to previous artistic processes focused on "beauty for the sake of beauty". Keller's work uses simple geometric forms and evocative imagery to further elucidate the meaning behind each design.

12 PT

The 1950s saw the distillation of International Typographic Style elements into sans-serif font families such as Univers. Univers paved the way for Max Miedinger and collaborator Edouard Hoffman to design the typeface Neue Haas Grotesk, which would be later renamed Helvetica. The goal with Helvetica was to create a pure typeface that could be applied to longer texts and that was highly readable. The movement began to coalesce after a periodical publication began in 1959 titled New Graphic

Design, which was edited by several influential designers who played major roles in the development of International Typographic Style. The format of the journal represented many of the important elements of the style—visually demonstrating the content—and was published internationally. Many of Müller-Brockmann's feature large photographs as objective symbols meant to convey his ideas in particularly clear and powerful ways.

9 PT

During the 1900s other design based movements were formulating, influencing and influenced by the International Typographic movement. These movements emerged within the relationships between artistic fields including architecture, literature, graphic design, painting, sculpting etc. De Stijl was a Dutch artistic movement that saw prominence in the period between 1917 and 1931. Referred to as neoplasticism, this artistic strategy sought to reflect a new Utopian ideal of spiritual harmony and order. It was a form of pure abstraction through reduction to the essentials of

form and colour, employing vertical and horizontal layouts using only black and white and primary colors. Proponents of this movement included painters like Piet Mondrian, Vilmos Huszar and Bart van der Leek as well as architects like Gerrit Rietveld, Robert van 't Hoff and J. J. P. Oud. Bauhaus was a German-based movement that emphasized purity of geometry, absence of ornamentation and the motto 'form follows function'. This was a school of thought that combined craftsmanship with the fine arts and was founded by Walter Gropius. The goal was to work towards the essence of the form

follows function relationship to facilitate a style that could be applied to all design problems; the International Style. Constructivism was an art/architectural philosophy that emerged from Russia in the 1920s. The style develops by assorted mechanical objects that are combined into abstract mobile structural forms. Hallmarks of the movement include geometric reduction, photo-montage and simplified palettes.

TT Firs Text
Thin

24 PT

This idea of the solution to the design emerging from the problem itself was a reaction to previous artistic processes focused on "beauty for the sake of beauty". Keller's work uses simple geometric forms and evocative imagery to further elucidate the meaning behind each design.

12 PT

The 1950s saw the distillation of International Typographic Style elements into sans-serif font families such as Univers. Univers paved the way for Max Miedinger and collaborator Edouard Hoffman to design the typeface Neue Haas Grotesk, which would be later renamed Helvetica. The goal with Helvetica was to create a pure typeface that could be applied to longer texts and that was highly readable. The movement began to coalesce after a periodical publication began in 1959 titled New

Graphic Design, which was edited by several influential designers who played major roles in the development of International Typographic Style. The format of the journal represented many of the important elements of the style—visually demonstrating the content—and was published internationally. Many of Müller-Brockmann's feature large photographs as objective symbols meant to convey his ideas in particularly clear and powerful ways.

9 PT

During the 1900s other design based movements were formulating, influencing and influenced by the International Typographic movement. These movements emerged within the relationships between artistic fields including architecture, literature, graphic design, painting, sculpting etc. De Stijl was a Dutch artistic movement that saw prominence in the period between 1917 and 1931. Referred to as neoplasticism, this artistic strategy sought to reflect a new Utopian ideal of spiritual harmony and order. It was a form of pure abstraction through reduction to the essentials of form and

colour, employing vertical and horizontal layouts using only black and white and primary colors. Proponents of this movement included painters like Piet Mondrian, Vilmos Huszar and Bart van der Leck as well as architects like Gerrit Rietveld, Robert van 't Hoff and J. J. P. Oud. Bauhaus was a German-based movement that emphasized purity of geometry, absence of ornamentation and the motto 'form follows function'. This was a school of thought that combined craftsmanship with the fine arts and was founded by Walter Gropius. The goal was to work towards the essence

of the form follows function relationship to facilitate a style that could be applied to all design problems; the International Style. Constructivism was an art/architectural philosophy that emerged from Russia in the 1920s. The style develops by assorted mechanical objects that are combined into abstract mobile structural forms. Hallmarks of the movement include geometric reduction, photo-montage and simplified palettes.

TT Firs Text
ExtraLight

24 PT

This idea of the solution to the design emerging from the problem itself was a reaction to previous artistic processes focused on "beauty for the sake of beauty". Keller's work uses simple geometric forms and evocative imagery to further elucidate the meaning behind each design.

12 PT

The 1950s saw the distillation of International Typographic Style elements into sans-serif font families such as Univers. Univers paved the way for Max Miedinger and collaborator Edouard Hoffman to design the typeface Neue Haas Grotesk, which would be later renamed Helvetica. The goal with Helvetica was to create a pure typeface that could be applied to longer texts and that was highly readable. The movement began to coalesce after a periodical publication began in 1959

titled New Graphic Design, which was edited by several influential designers who played major roles in the development of International Typographic Style. The format of the journal represented many of the important elements of the style—visually demonstrating the content—and was published internationally. Many of Müller-Brockmann's feature large photographs as objective symbols meant to convey his ideas in particularly clear and powerful ways.

9 PT

During the 1900s other design based movements were formulating, influencing and influenced by the International Typographic movement. These movements emerged within the relationships between artistic fields including architecture, literature, graphic design, painting, sculpting etc. De Stijl was a Dutch artistic movement that saw prominence in the period between 1917 and 1931. Referred to as neoplasticism, this artistic strategy sought to reflect a new Utopian ideal of spiritual harmony and order. It was a form of pure abstraction through reduction to the essentials of

form and colour, employing vertical and horizontal layouts using only black and white and primary colors. Proponents of this movement included painters like Piet Mondrian, Vilmos Huszar and Bart van der Leck as well as architects like Gerrit Rietveld, Robert van 't Hoff and J. J. P. Oud. Bauhaus was a German-based movement that emphasized purity of geometry, absence of ornamentation and the motto 'form follows function'. This was a school of thought that combined craftsmanship with the fine arts and was founded by Walter Gropius. The goal was to work towards the essence

of the form follows function relationship to facilitate a style that could be applied to all design problems; the International Style. Constructivism was an art/architectural philosophy that emerged from Russia in the 1920s. The style develops by assorted mechanical objects that are combined into abstract mobile structural forms. Hallmarks of the movement include geometric reduction, photo-montage and simplified palettes.

TT Firs Text
Light

24 PT

This idea of the solution to the design emerging from the problem itself was a reaction to previous artistic processes focused on "beauty for the sake of beauty". Keller's work uses simple geometric forms and evocative imagery to further elucidate the meaning behind each design.

12 PT

The 1950s saw the distillation of International Typographic Style elements into sans-serif font families such as Univers. Univers paved the way for Max Miedinger and collaborator Edouard Hoffman to design the typeface Neue Haas Grotesk, which would be later renamed Helvetica. The goal with Helvetica was to create a pure typeface that could be applied to longer texts and that was highly readable. The movement began to coalesce after a periodical publication began in 1959

titled *New Graphic Design*, which was edited by several influential designers who played major roles in the development of International Typographic Style. The format of the journal represented many of the important elements of the style—visually demonstrating the content—and was published internationally. Many of Müller-Brockmann's feature large photographs as objective symbols meant to convey his ideas in particularly clear and powerful ways.

9 PT

During the 1900s other design based movements were formulating, influencing and influenced by the International Typographic movement. These movements emerged within the relationships between artistic fields including architecture, literature, graphic design, painting, sculpting etc. De Stijl was a Dutch artistic movement that saw prominence in the period between 1917 and 1931. Referred to as neoplasticism, this artistic strategy sought to reflect a new Utopian ideal of spiritual harmony and order. It was a form of pure abstraction through reduction to the

essentials of form and colour, employing vertical and horizontal layouts using only black and white and primary colors. Proponents of this movement included painters like Piet Mondrian, Vilmos Huszar and Bart van der Leck as well as architects like Gerrit Rietveld, Robert van 't Hoff and J. J. P. Oud. Bauhaus was a German-based movement that emphasized purity of geometry, absence of ornamentation and the motto 'form follows function'. This was a school of thought that combined craftsmanship with the fine arts and was founded by Walter Gropius. The

goal was to work towards the essence of the form follows function relationship to facilitate a style that could be applied to all design problems; the International Style. Constructivism was an art/architectural philosophy that emerged from Russia in the 1920s. The style develops by assorted mechanical objects that are combined into abstract mobile structural forms. Hallmarks of the movement include geometric reduction, photo-montage and simplified palettes.

TT Firs Text
Regular

24 PT

This idea of the solution to the design emerging from the problem itself was a reaction to previous artistic processes focused on "beauty for the sake of beauty". Keller's work uses simple geometric forms and evocative imagery to further elucidate the meaning behind each

12 PT

The 1950s saw the distillation of International Typographic Style elements into sans-serif font families such as Univers. Univers paved the way for Max Miedinger and collaborator Edouard Hoffman to design the typeface Neue Haas Grotesk, which would be later renamed Helvetica. The goal with Helvetica was to create a pure typeface that could be applied to longer texts and that was highly readable. The movement began to coalesce after a periodical publication began in 1959

titled *New Graphic Design*, which was edited by several influential designers who played major roles in the development of International Typographic Style. The format of the journal represented many of the important elements of the style—visually demonstrating the content—and was published internationally. Many of Müller-Brockmann's feature large photographs as objective symbols meant to convey his ideas in particularly clear and powerful ways.

9 PT

During the 1900s other design based movements were formulating, influencing and influenced by the International Typographic movement. These movements emerged within the relationships between artistic fields including architecture, literature, graphic design, painting, sculpting etc. De Stijl was a Dutch artistic movement that saw prominence in the period between 1917 and 1931. Referred to as neoplasticism, this artistic strategy sought to reflect a new Utopian ideal of spiritual harmony and order. It was a form of pure abstraction through reduction to

the essentials of form and colour, employing vertical and horizontal layouts using only black and white and primary colors. Proponents of this movement included painters like Piet Mondrian, Vilmos Huszar and Bart van der Leck as well as architects like Gerrit Rietveld, Robert van 't Hoff and J. J. P. Oud. Bauhaus was a German-based movement that emphasized purity of geometry, absence of ornamentation and the motto 'form follows function'. This was a school of thought that combined craftsmanship with the fine arts and was founded by Walter Gropius. The

goal was to work towards the essence of the form follows function relationship to facilitate a style that could be applied to all design problems; the International Style. Constructivism was an art/architectural philosophy that emerged from Russia in the 1920s. The style develops by assorted mechanical objects that are combined into abstract mobile structural forms. Hallmarks of the movement include geometric reduction, photo-montage and simplified palettes.

TT Firs Text
Normal

24 PT

This idea of the solution to the design emerging from the problem itself was a reaction to previous artistic processes focused on "beauty for the sake of beauty". Keller's work uses simple geometric forms and evocative imagery to further elucidate the meaning behind each

12 PT

The 1950s saw the distillation of International Typographic Style elements into sans-serif font families such as Univers. Univers paved the way for Max Miedinger and collaborator Edouard Hoffman to design the typeface Neue Haas Grotesk, which would be later renamed Helvetica. The goal with Helvetica was to create a pure typeface that could be applied to longer texts and that was highly readable. The movement began to coalesce after a

periodical publication began in 1959 titled New Graphic Design, which was edited by several influential designers who played major roles in the development of International Typographic Style. The format of the journal represented many of the important elements of the style—visually demonstrating the content—and was published internationally. Many of Müller-Brockmann's feature large photographs as objective symbols meant to convey his ideas in par-

9 PT

During the 1900s other design based movements were formulating, influencing and influenced by the International Typographic movement. These movements emerged within the relationships between artistic fields including architecture, literature, graphic design, painting, sculpting etc. De Stijl was a Dutch artistic movement that saw prominence in the period between 1917 and 1931. Referred to as neoplasticism, this artistic strategy sought to reflect a new Utopian ideal of spiritual harmony and order. It was a form of pure

abstraction through reduction to the essentials of form and colour, employing vertical and horizontal layouts using only black and white and primary colors. Proponents of this movement included painters like Piet Mondrian, Vilmos Huszar and Bart van der Leck as well as architects like Gerrit Rietveld, Robert van 't Hoff and J. J. P. Oud. Bauhaus was a German-based movement that emphasized purity of geometry, absence of ornamentation and the motto 'form follows function'. This was a school of thought that combined craftsmanship

with the fine arts and was founded by Walter Gropius. The goal was to work towards the essence of the form follows function relationship to facilitate a style that could be applied to all design problems; the International Style. Constructivism was an art/architectural philosophy that emerged from Russia in the 1920s. The style develops by assorted mechanical objects that are combined into abstract mobile structural forms. Hallmarks of the movement include geometric reduction, photo-montage and simplified palettes.

24 PT

This idea of the solution to the design emerging from the problem itself was a reaction to previous artistic processes focused on "beauty for the sake of beauty". Keller's work uses simple geometric forms and evocative imagery to further elucidate the meaning

12 PT

The 1950s saw the distillation of International Typographic Style elements into sans-serif font families such as Univers. Univers paved the way for Max Miedinger and collaborator Edouard Hoffman to design the typeface Neue Haas Grotesk, which would be later renamed Helvetica. The goal with Helvetica was to create a pure typeface that could be applied to longer texts and that was highly readable. The movement began to coalesce after a

periodical publication began in 1959 titled New Graphic Design, which was edited by several influential designers who played major roles in the development of International Typographic Style. The format of the journal represented many of the important elements of the style—visually demonstrating the content—and was published internationally. Many of Müller-Brockmann's feature large photographs as objective symbols meant to convey his ideas

9 PT

During the 1900s other design based movements were formulating, influencing and influenced by the International Typographic movement. These movements emerged within the relationships between artistic fields including architecture, literature, graphic design, painting, sculpting etc. De Stijl was a Dutch artistic movement that saw prominence in the period between 1917 and 1931. Referred to as neoplasticism, this artistic strategy sought to reflect a new Utopian ideal of spiritual harmony and order. It was a form of

pure abstraction through reduction to the essentials of form and colour, employing vertical and horizontal layouts using only black and white and primary colors. Proponents of this movement included painters like Piet Mondrian, Vilmos Huszar and Bart van der Leck as well as architects like Gerrit Rietveld, Robert van 't Hoff and J. J. P. Oud. Bauhaus was a German-based movement that emphasized purity of geometry, absence of ornamentation and the motto 'form follows function'. This was a school of thought that combined craftsmanship

with the fine arts and was founded by Walter Gropius. The goal was to work towards the essence of the form follows function relationship to facilitate a style that could be applied to all design problems; the International Style. Constructivism was an art/architectural philosophy that emerged from Russia in the 1920s. The style develops by assorted mechanical objects that are combined into abstract mobile structural forms. Hallmarks of the movement include geometric reduction, photo-montage and simplified palettes.

24 PT

This idea of the solution to the design emerging from the problem itself was a reaction to previous artistic processes focused on "beauty for the sake of beauty". Keller's work uses simple geometric forms and evocative imagery to further elucidate the meaning

12 PT

The 1950s saw the distillation of International Typographic Style elements into sans-serif font families such as Univers. Univers paved the way for Max Miedinger and collaborator Edouard Hoffman to design the typeface Neue Haas Grotesk, which would be later renamed Helvetica. The goal with Helvetica was to create a pure typeface that could be applied to longer texts and that was highly readable. The movement began to coalesce after a

periodical publication began in 1959 titled *New Graphic Design*, which was edited by several influential designers who played major roles in the development of International Typographic Style. The format of the journal represented many of the important elements of the style—visually demonstrating the content—and was published internationally. Many of Müller-Brockmann's feature large photographs as objective symbols meant to

9 PT

During the 1900s other design based movements were formulating, influencing and influenced by the International Typographic movement. These movements emerged within the relationships between artistic fields including architecture, literature, graphic design, painting, sculpting etc. De Stijl was a Dutch artistic movement that saw prominence in the period between 1917 and 1931. Referred to as neoplasticism, this artistic strategy sought to reflect a new Utopian ideal of spiritual harmony and order. It was

a form of pure abstraction through reduction to the essentials of form and colour, employing vertical and horizontal layouts using only black and white and primary colors. Proponents of this movement included painters like Piet Mondrian, Vilmos Huszar and Bart van der Leck as well as architects like Gerrit Rietveld, Robert van 't Hoff and J. J. P. Oud. Bauhaus was a German-based movement that emphasized purity of geometry, absence of ornamentation and the motto 'form follows function'. This was a school

of thought that combined craftsmanship with the fine arts and was founded by Walter Gropius. The goal was to work towards the essence of the form follows function relationship to facilitate a style that could be applied to all design problems; the International Style. Constructivism was an art/architectural philosophy that emerged from Russia in the 1920s. The style develops by assorted mechanical objects that are combined into abstract mobile structural forms. Hallmarks of the movement include geometric reduc-

24 PT

This idea of the solution to the design emerging from the problem itself was a reaction to previous artistic processes focused on "beauty for the sake of beauty". Keller's work uses simple geometric forms and evocative imagery to further elucidate the me-

12 PT

The 1950s saw the distillation of International Typographic Style elements into sans-serif font families such as Univers. Univers paved the way for Max Miedinger and collaborator Edouard Hoffman to design the typeface Neue Haas Grotesk, which would be later renamed Helvetica. The goal with Helvetica was to create a pure typeface that could be applied to longer texts and that was highly readable. The movement began to coalesce

after a periodical publication began in 1959 titled *New Graphic Design*, which was edited by several influential designers who played major roles in the development of International Typographic Style. The format of the journal represented many of the important elements of the style—visually demonstrating the content—and was published internationally. Many of Müller-Brockmann's feature large photographs as objective symbols

9 PT

During the 1900s other design based movements were formulating, influencing and influenced by the International Typographic movement. These movements emerged within the relationships between artistic fields including architecture, literature, graphic design, painting, sculpting etc. De Stijl was a Dutch artistic movement that saw prominence in the period between 1917 and 1931. Referred to as neoplasticism, this artistic strategy sought to reflect a new Utopian ideal of spiritual harmo-

ny and order. It was a form of pure abstraction through reduction to the essentials of form and colour, employing vertical and horizontal layouts using only black and white and primary colors. Proponents of this movement included painters like Piet Mondrian, Vilmos Huszar and Bart van der Leck as well as architects like Gerrit Rietveld, Robert van 't Hoff and J. J. P. Oud. Bauhaus was a German-based movement that emphasized purity of geometry, absence of ornamentation and the motto 'form follows function'.

This was a school of thought that combined craftsmanship with the fine arts and was founded by Walter Gropius. The goal was to work towards the essence of the form follows function relationship to facilitate a style that could be applied to all design problems; the International Style. Constructivism was an art/architectural philosophy that emerged from Russia in the 1920s. The style develops by assorted mechanical objects that are combined into abstract mobile structural forms. Hallmarks of the move-

24 PT

This idea of the solution to the design emerging from the problem itself was a reaction to previous artistic processes focused on "beauty for the sake of beauty". Keller's work uses simple geometric forms and evocative imagery to further elucidate the me-

12 PT

The 1950s saw the distillation of International Typographic Style elements into sans-serif font families such as Univers. Univers paved the way for Max Miedinger and collaborator Edouard Hoffman to design the typeface Neue Haas Grotesk, which would be later renamed Helvetica. The goal with Helvetica was to create a pure typeface that could be applied to longer texts and that was highly readable. The movement be-

gan to coalesce after a periodical publication began in 1959 titled New Graphic Design, which was edited by several influential designers who played major roles in the development of International Typographic Style. The format of the journal represented many of the important elements of the style—visually demonstrating the content—and was published internationally. Many of Müller-Brockmann's feature large pho-

9 PT

During the 1900s other design based movements were formulating, influencing and influenced by the International Typographic movement. These movements emerged within the relationships between artistic fields including architecture, literature, graphic design, painting, sculpting etc. De Stijl was a Dutch artistic movement that saw prominence in the period between 1917 and 1931. Referred to as neoplasticism, this artistic strategy sought to reflect a new Utopian ideal of spiritual

harmony and order. It was a form of pure abstraction through reduction to the essentials of form and colour, employing vertical and horizontal layouts using only black and white and primary colors. Proponents of this movement included painters like Piet Mondrian, Vilmos Huszar and Bart van der Leck as well as architects like Gerrit Rietveld, Robert van 't Hoff and J. J. P. Oud. Bauhaus was a German-based movement that emphasized purity of geometry, absence of ornamentation and

the motto 'form follows function'. This was a school of thought that combined craftsmanship with the fine arts and was founded by Walter Gropius. The goal was to work towards the essence of the form follows function relationship to facilitate a style that could be applied to all design problems; the International Style. Constructivism was an art/architectural philosophy that emerged from Russia in the 1920s. The style develops by assorted mechanical objects that are combined into abstract

24 PT

This idea of the solution to the design emerging from the problem itself was a reaction to previous artistic processes focused on "beauty for the sake of beauty". Keller's work uses simple geometric forms and evocative imagery to further

12 PT

The 1950s saw the distillation of International Typographic Style elements into sans-serif font families such as Univers. Univers paved the way for Max Miedinger and collaborator Edouard Hoffman to design the typeface Neue Haas Grotesk, which would be later renamed Helvetica. The goal with Helvetica was to create a pure typeface that could be applied to longer texts and that was highly readable. The move-

ment began to coalesce after a periodical publication began in 1959 titled New Graphic Design, which was edited by several influential designers who played major roles in the development of International Typographic Style. The format of the journal represented many of the important elements of the style—visually demonstrating the content—and was published internationally. Many of Müller-Brockmann's feature

9 PT

During the 1900s other design based movements were formulating, influencing and influenced by the International Typographic movement. These movements emerged within the relationships between artistic fields including architecture, literature, graphic design, painting, sculpting etc. De Stijl was a Dutch artistic movement that saw prominence in the period between 1917 and 1931. Referred to as neoplasticism, this artistic strategy sought to reflect a new Utopian ideal of spiritual

harmony and order. It was a form of pure abstraction through reduction to the essentials of form and colour, employing vertical and horizontal layouts using only black and white and primary colors. Proponents of this movement included painters like Piet Mondrian, Vilmos Huszar and Bart van der Leck as well as architects like Gerrit Rietveld, Robert van 't Hoff and J. J. P. Oud. Bauhaus was a German-based movement that emphasized purity of geometry, absence of ornamentation and

the motto 'form follows function'. This was a school of thought that combined craftsmanship with the fine arts and was founded by Walter Gropius. The goal was to work towards the essence of the form follows function relationship to facilitate a style that could be applied to all design problems; the International Style. Constructivism was an art/architectural philosophy that emerged from Russia in the 1920s. The style develops by assorted mechanical objects that are combined into

TT Firs Text supports more than 235 languages including Northern, Western, Central European languages, most of Cyrillic.

CYRILLIC

Russian, Belarusian, Bosnian, Bulgarian, Macedonian, Serbian, Ukrainian, Kazakh, Kirghiz, Tadzhik, Turkmen, Uzbek, Lezgian, Abazin, Agul, Archi, Avar, Dargwa, Ingush, Kabardian, Kabardino-Cherkess, Karachay-Balkar, Khvarshi, Kumyk, Lak, Nogai, Rutul, Tabasaran, Tsakhur, Buryat, Komi-Permyak, Komi-Zyrian, Siberian Tatar, Tofalar, Touva, Bashkir, Chechen, Chuvash, Erzya, Kryashen Tatar, Mordvin-moksha, Tatar Volgaic, Udmurt, Uighur, Rusyn, Montenegrin, Romani, Dungan, Karakalpak, Shughni, Mongolian, Adyghe, Kalmyk

LATIN

English, Albanian, Basque, Catalan, Croatian, Czech, Danish, Dutch, Estonian, Finnish, French, German, Hungarian, Icelandic, Irish, Italian, Latvian, Lithuanian, Luxembourgish, Maltese, Moldavian, Montenegrin, Norwegian, Polish, Portuguese, Romanian, Serbian, Slovak, Slovenian, Spanish, Swedish, Swiss German, Valencian, Azerbaijani, Kazakh, Turkish, Uzbek, Acehnese, Banjar, Betawi, Bislama, Boholano, Cebuano, Chamorro, Fijian, Filipino, Hiri Motu, Ilocano, Indonesian, Javanese, Khasi, Malay, Marshallese, Minangkabau, Nauruan, Nias, Palauan, Rohingya, Salar, Samoan, Sasak, Sundanese, Tagalog, Tahitian, Tetum, Tok Pisin, Tongan, Uyghur, Afar, Asu, Aymara, Bemba, Bena, Chichewa, Chiga, Embu, Gikuyu, Gusii, Jola-Fonyi, Kabuverdianu, Kalenjin, Kamba, Kikuyu, Kinyarwanda, Kirundi, Kongo, Luba-Kasai, Luganda, Luo, Luyia, Machame, Makhuwa-Meetto, Makonde, Malagasy, Mauritian Creole, Meru, Morisyen, Ndebele, Nyankole, Oromo, Rombo, Rundi, Rwa, Samburu, Sango, Sangu, Sena, Seychellois Creole, Shambala, Shona, Soga, Somali, Sotho, Swahili, Swazi, Taita, Teso, Tsonga, Tswana, Vunjo, Wolof, Xhosa, Zulu, Ganda, Maori, Alsatian, Aragonese, Arumanian, Asturian, Belarusian, Bosnian, Breton, Bulgarian, Colognian, Cornish, Corsican, Esperanto, Faroese, Frisian, Friulian, Gaelic, Gagauz, Galician, Interlingua, Judaeo-Spanish, Karaim, Kashubian, Ladin, Leonese, Manx, Occitan, Rheto-Romance, Romansh, Scots, Silesian, Sorbian, Vastese, Volapük, Võro, Walloon, Walser, Welsh, Karakalpak, Kurdish, Talysh, Tsakhur (Azerbaijan), Turkmen, Zaza, Aleut, Cree, Haitian Creole, Hawaiian, Innu-aimun, Lakota, Karachay-Balkar, Karelian, Livvi-Karelian, Ludic, Tatar, Vepsian, Guarani, Nahuatl, Quechua

şùppôrtś
māný
diffěreñt
lăṅguåğęs

SPANISH

Suiza es un Estado federal con 26 estados, llamados cantones y cuenta con cuatro idiomas oficiales: alemán, francés, italiano y romanche. Suiza es el cuarto país más rico del mundo, según su PIB per cápita, con 83 718 dólares estadounidenses (2011).

FRENCH

La Suisse, en forme longue la Confédération suisse, est un pays d'Europe centrale et, selon certaines définitions, de l'Ouest, formé de 26 cantons, avec Berne pour capitale de facto. La Suisse est bordée par l'Allemagne au nord, l'Autriche et le Liechtenstein à l'est-nord-est.

RUSSIAN

Государство Швейцария — государство в Западной Европе, федеративная республика, состоящая из 26 кантонов с федеральными властями в Берне. Швейцария граничит с Италией на юге, Францией на западе, Германией на севере, Австрией и Лихтенштейном на востоке.

BULGARIAN

Швейцария е малка вътрешноконтинентална федерация от двадесет и шест кантона в Централна Европа. Латинското наименование на страната е Confoederatio Helvetica. От това име идва съкращението на швейцарската валута по ISO – CH.

FINNISH

Sveitsi on liittovaltio, joka koostuu 26 kantonista. Sen naapurimaat ovat pohjoisessa Saksa, etelässä Italia, idässä Itävalta ja Liechtenstein sekä lännessä Ranska. Sveitsillä ei virallisesti ole pääkaupunkia, mutta Bern, joka on maan viidenneksi suurin kaupunki, toimii de facto pääkaupunkina.

SWEDISH

Schweiz har en lång tradition av politisk och militär neutralitet, men även av indirekt internationellt samarbete då det är hem för många internationella organisationer. Landet är sedan september 2002 medlem av FN, vilken även har ett av sina huvudkontor i Genève.



TABULAR FIGURES

1234567890

1234567890

TABULAR OLDSTYLE

1234567890

1234567890

PROPORTIONAL OLDSTYLE

1234567890

1234567890

NUMERATORS

H12345

H¹²³⁴⁵

DENOMINATORS

H12345

H₁₂₃₄₅

SUPERSCRIPTS

H12345

H¹²³⁴⁵

SUBSCRIPTS

H12345

H₁₂₃₄₅

FRACTIONS

1/2 3/4

½ ¾

ORDINALS

2^{ao}

2^{ao}

CASE SENSITIVE

{{(H)}}

{{(H)}}

DISCRETIONARY LIGATURES

Дд дд

ДД дд

SS01 – I with serifs

ıııı

ıııı

SS03 – Single-storey a

аáăă

аáăă

SS05 – y with squared terminal

уúÿ

уúÿ

SS06 – Circled Figures

12345

①②③④⑤

SS07 – Negative Circled Figures

12345

①②③④⑤

SS11 – Alternative Ampersand 1

&

&

SS12 – Romanian Comma Accent

ȘșȚț

ȘșȚț

SS13 – Dutch IJ

IJ ij ÍJ íj

IJ ij ÍJ íj

SS14 – Catalan Ldot

L·L l·l

L·L l·l

SS15 – Bashkir localization

FҘҘ

FҘҘ

SS16 – Chuvash localization

Ҫҫ

Ҫҫ

SS17 – Bulgarian localization

ДЛФВГд

ДЛФВГг

SS18 – Serbian localization

б

б

SS19 – J with serifs

IJJĴ

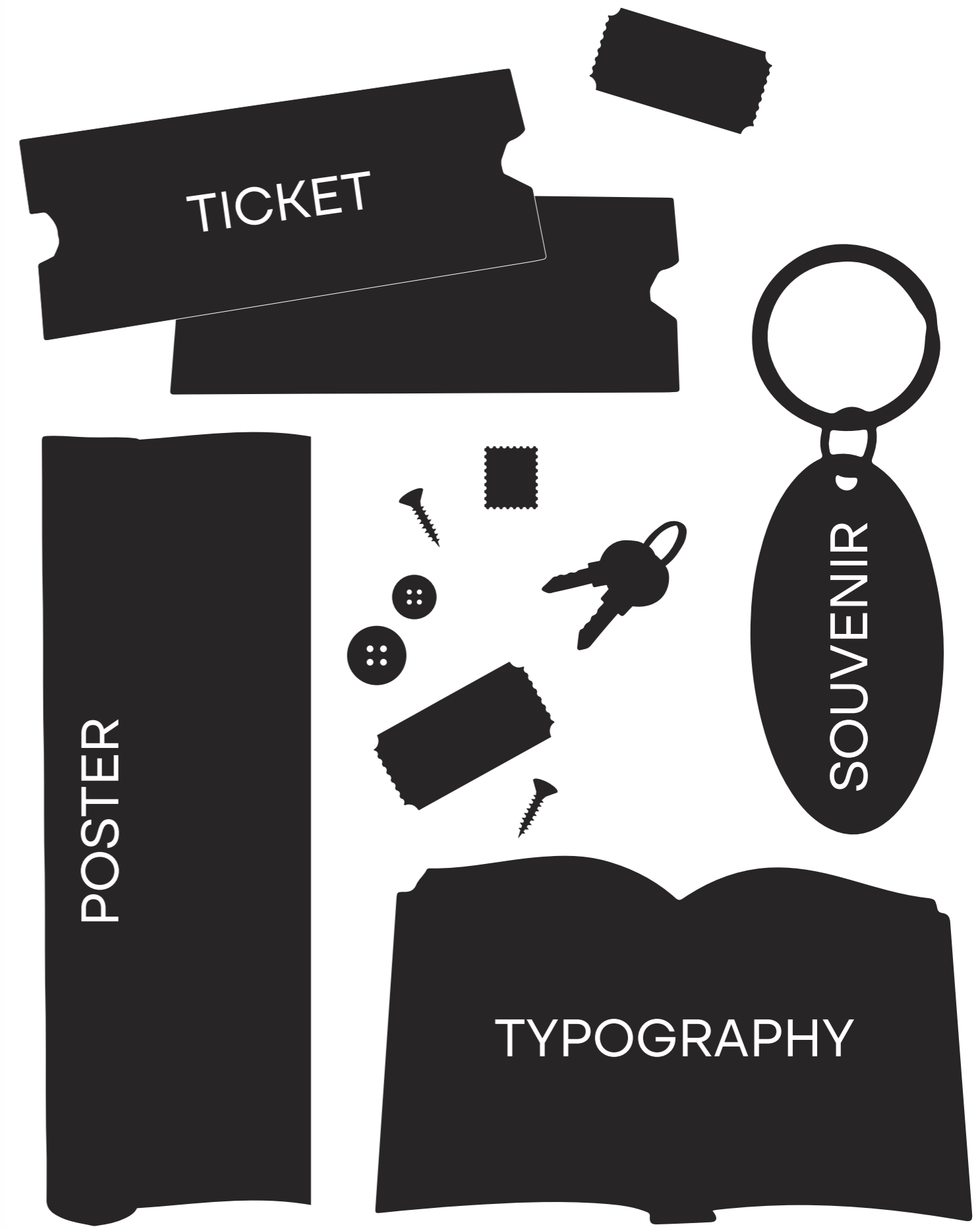
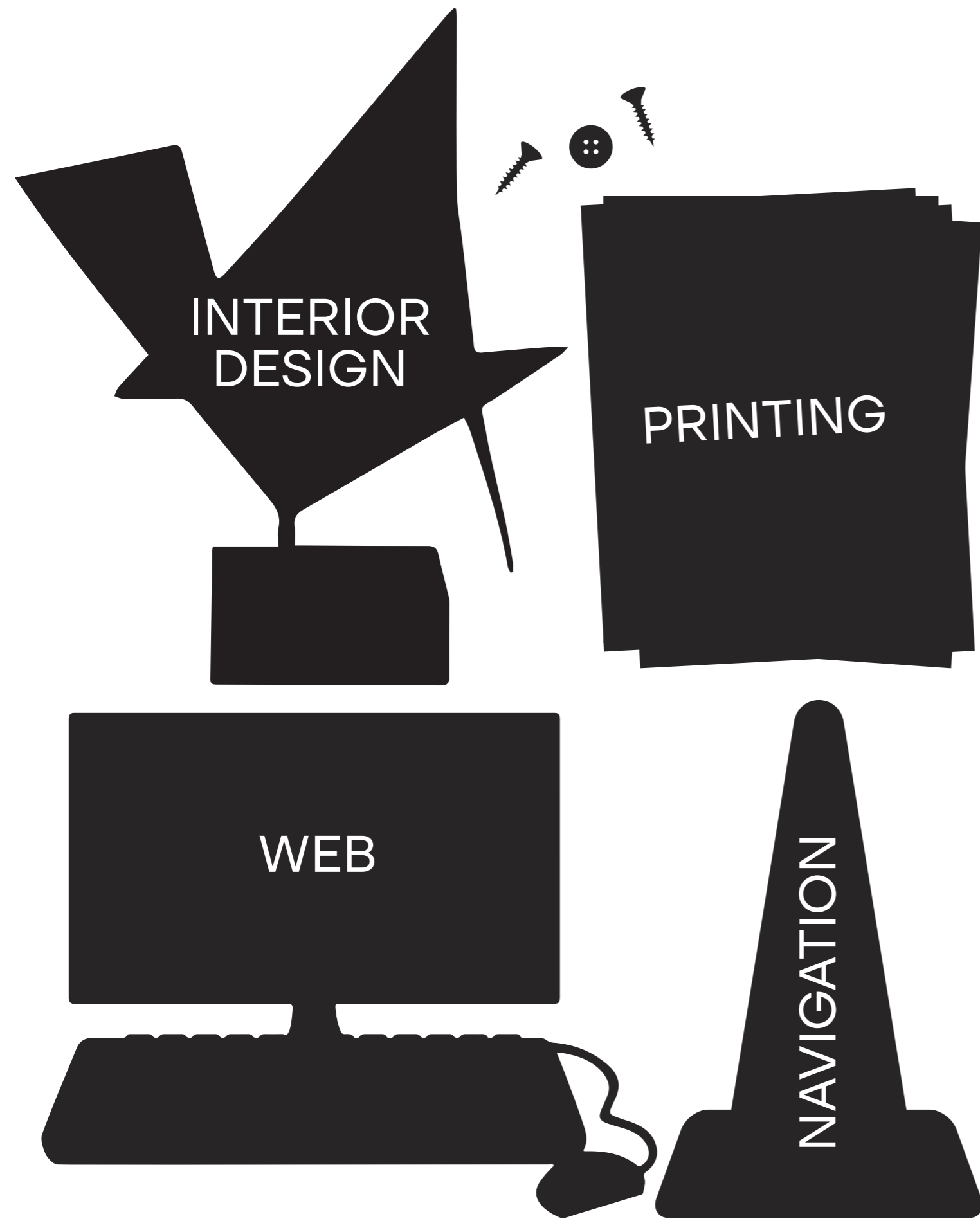
IJJĴ

BASIC GLYPHS

Imperial Aca-
demy of Turku

STYLISTIC ALTERNATES

Imperial Aca-
demy of Turku



TypeType company was founded in 2013 by Ivan Gladkikh, a type designer with a 10 years' experience, and Alexander Kudryavtsev, an experienced manager. Over the past 10 years we've released more than 75+ families, and the company has turned into a type foundry with a dedicated team.

Our mission is to create and distribute only carefully drawn, thoroughly tested, and perfectly optimized type-faces that are available to a wide range of customers.

Our team brings together people from different countries and continents. This cultural diversity helps us to create truly unique and comprehensive projects.

Copyright © TypeType Foundry 2013–2023.

All rights reserved.

For more information about our fonts,

please visit our website

www.typetype.org

Most of the texts used in this specimen are from Wikipedia.

